



WELL SPECIFIED AIR-CONDITIONED OFFICES
WITH OUTSTANDING PARKING IN AN ESTABLISHED
EDGE OF TOWN LOCATION IN TUNBRIDGE WELLS.

1,820 - 14,164 SQ FT

 CENTURY PLACE, LAMBERTS ROAD,
TUNBRIDGE WELLS TN2 3EH

TO LET

centuryplace-tw.com

Location

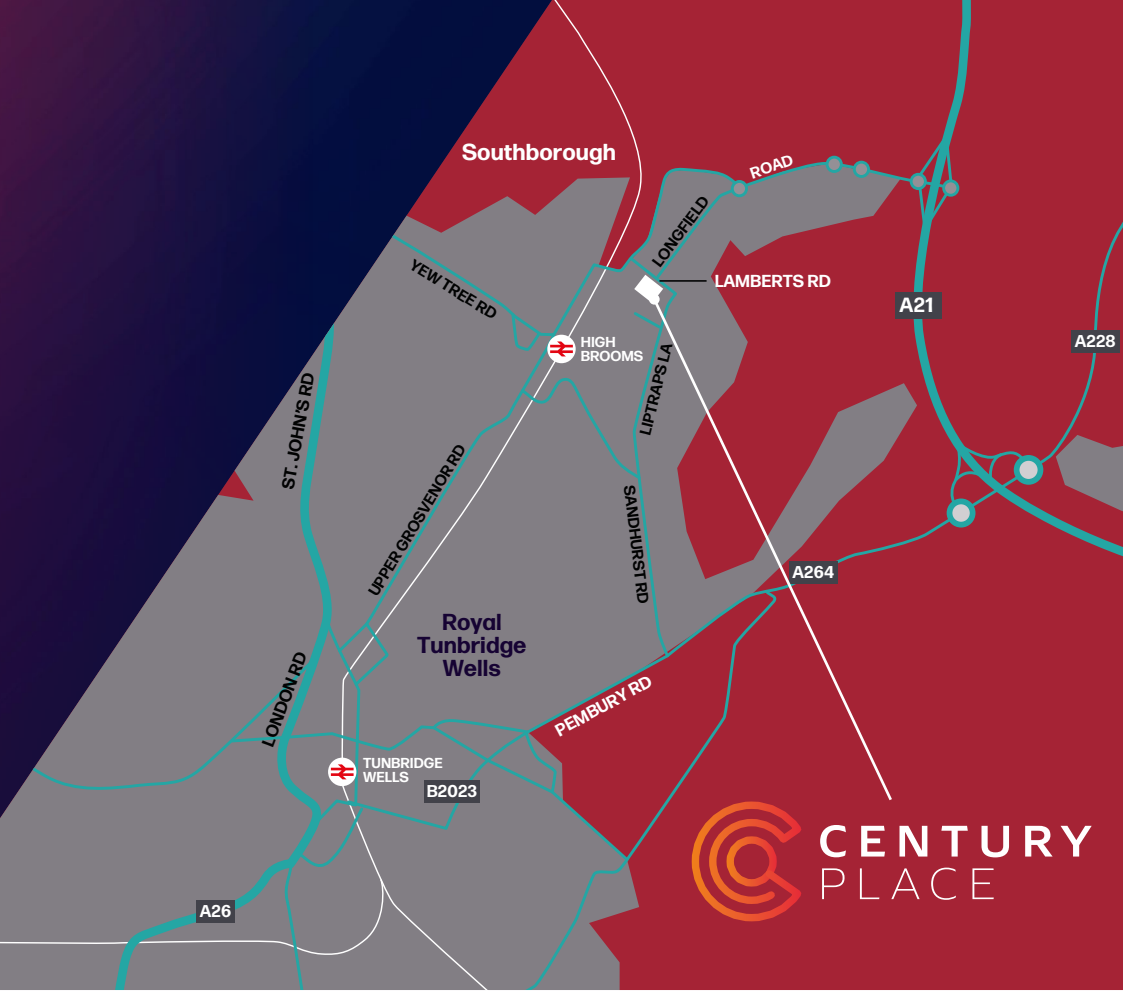
Century Place is located to the north east of the town centre, in a busy business district close to the A21. The property is bounded to the north by Lamberts Road and to the east by Liptraps Lane.

Longfield Road provides direct access to the A21 approximately half a mile north east of the property. Liptraps Lane leads towards the town centre approximately two miles to the south west.

RAIL TRAVEL TIMES

Approximate travel times from Tunbridge Wells Train Station:

Tonbridge.....	9 mins
Sevenoaks	19 mins
London Bridge	44 mins
London Cannon Street (via High Brooms)	44 mins
London Waterloo.....	50 mins
Ashford International.....	51 mins
London Charing Cross	55 mins



M25

A21

A21



High Brooms Station

Upper Grosvenor Road

Royal Victoria Place Shopping Centre

A26

Quarry Road

Main shopping district

Crescent Road Car Park

Hotel du Vin

A264

High Street (300m)

Tunbridge Wells Station (100m)

The Pantiles - stores, bars & eateries (750m)

A264 Mount Ephraim

Crescent Road

A26

A26

Tunbridge Wells



A264 Mount Ephraim

Tunbridge Wells is a wealthy commuter town in West Kent with a population of approximately 104,000 people. The town is 30 miles south east of central London and connected to the M25 and national motorway network by the A21 trunk road which intersects with the M25 about 12 miles to the north west.

Tunbridge Wells benefits from a busy train station which has regular services into London's Cannon Street and Charing Cross stations with the fastest service taking approximately 48 minutes. High Brooms railway station is within a 10 minute walk of the property and provides a direct service into London Cannon Street with a journey time of approximately 44 minutes.



[HOME](#)

[LOCATION](#)

[TUNBRIDGE WELLS](#)

[ACCOMMODATION 1](#)

[ACCOMMODATION 2](#)

[FURTHER INFORMATION](#)

Specification & Accommodation



Building 4 - First floor

Century Place provides air-conditioned office accommodation in an L-shaped terrace of five separate buildings.



RAISED FLOORS



OUTSTANDING ON-SITE CAR PARKING WITH RATIO OF 1:187 SQ FT APPROX.



DOUBLE GLAZED WINDOWS



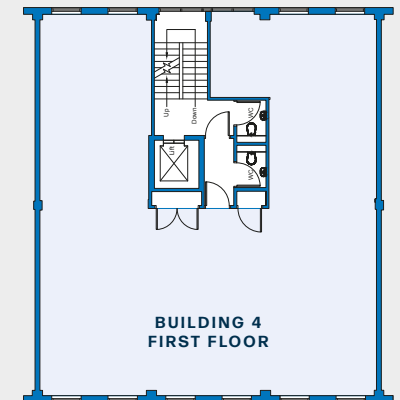
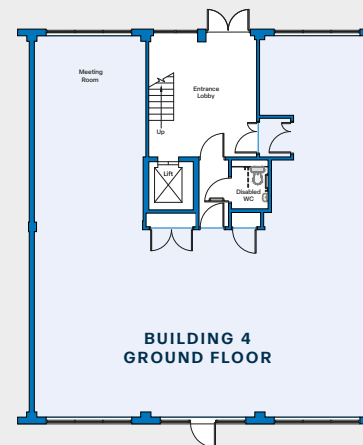
LIFT ACCESS TO ALL FLOORS



SUSPENDED CEILINGS WITH LED LIGHTING



COVERED CYCLE RACKS



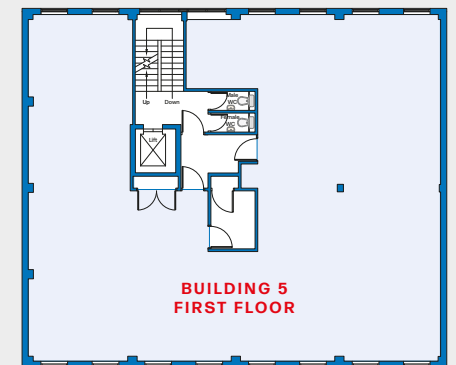
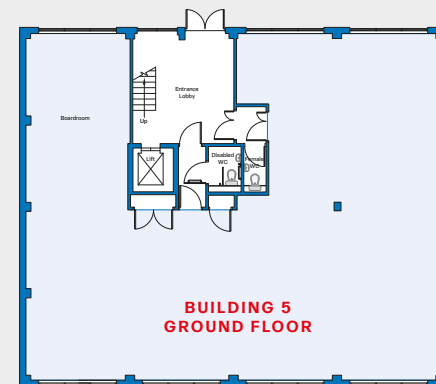
Specification & Accommodation



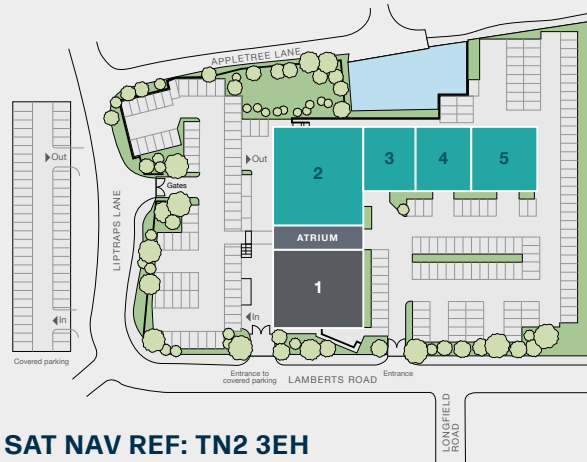
Building 5 - Ground floor

Building No.	Floor	sq ft	sq m	Parking
Building 2	Ground floor	2,881	267.6	16 spaces
Building 3	1st floor	2,330	216.5	11 spaces
Building 4	Ground floor	1,820	169.1	10 spaces
	1st floor	2,000	185.8	11 spaces
Building 5	Ground floor	2,533	235.3	14 spaces
	1st floor	2,600	241.5	14 spaces
Total		14,164	1,316	76 spaces (1:187 sq ft approx.)

Measured on a net internet basis



Site Plan



Terms

On Application.

EPC

An Energy Performance Certificate is available upon request.

Viewing

Viewing strictly by prior appointment with the agents:

BROADLANDS
Commercial Property Agents
www.broadlands.co.uk
01892 512422

Shane Raggett
shane.raggett@broadlands.co.uk
+44 (0) 7775 916 743

DB

020 7355 3033
dohertybaines.com

Phillip Papenfus
ppapenfus@dohertybaines.com
+44 (0) 7855 773 205



property with **impact.** 01732 897799 | propertywithimpact.com (E9235/WH)

Disclaimer: The accuracy of any description, dimensions, references to condition, necessary permissions for use and occupation and other details contained herein is not guaranteed and is for general guidance only and prospective purchasers or tenants must not rely on them as statements of fact or representations and must satisfy themselves as to their accuracy. Broadlands nor any of their employees or representatives has any authority to make or give any representation or warranty or enter into any contract whatever in relation to the Property. Rents quoted in these particulars may be subject to VAT in addition. The reference to any mechanical or electrical equipment or other facilities at the Property shall not constitute a representation (unless otherwise stated) as to its state or condition or that it is capable of fulfilling its intended function. Prospective tenants/purchasers should satisfy themselves as to the fitness of such equipment for their requirements. Date of Publication February 2024.